

Improve your business , Upgrade your software.

Discover the **Show Offer!**
EuroBLECH Hannover 2014
www.salvagninigroup.com/promoeb14/



Salvagnini guarantees the perfect integration and continuity between machine and office proprietary software. The Salvagnini software packages and their upgrades always include the most recent releases and new functions for an easier and more efficient use of the systems and a faster return of investment.

CAMFIBER

WHAT?

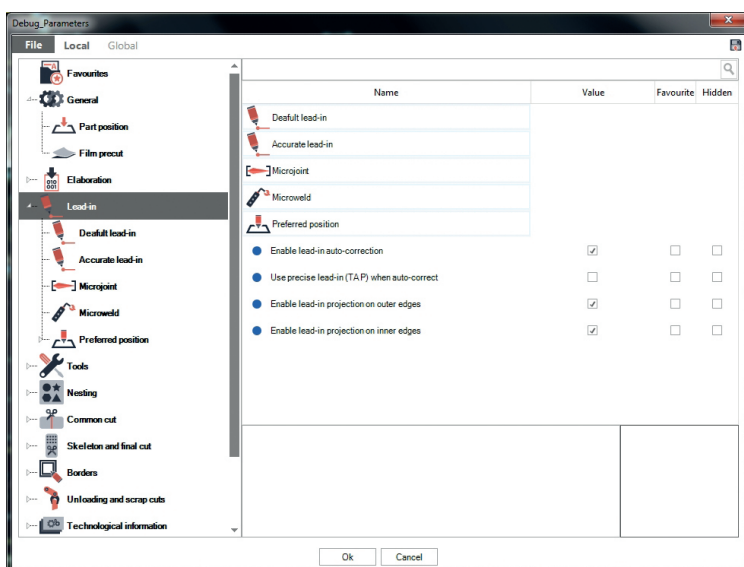
- CAD/CAM software for the automatic generation of programs for the Salvagnini laser cutting systems.

WHERE?

- On all the Salvagnini laser cutting system programming stations.

WHY?

- It allows Salvagnini's experience in fiber laser cutting to be transferred to part programming.
- It guarantees the optimization of the technological data of the program.
- It reduces the time for making and programming the first good part for.



NESTFIBER

WHAT?

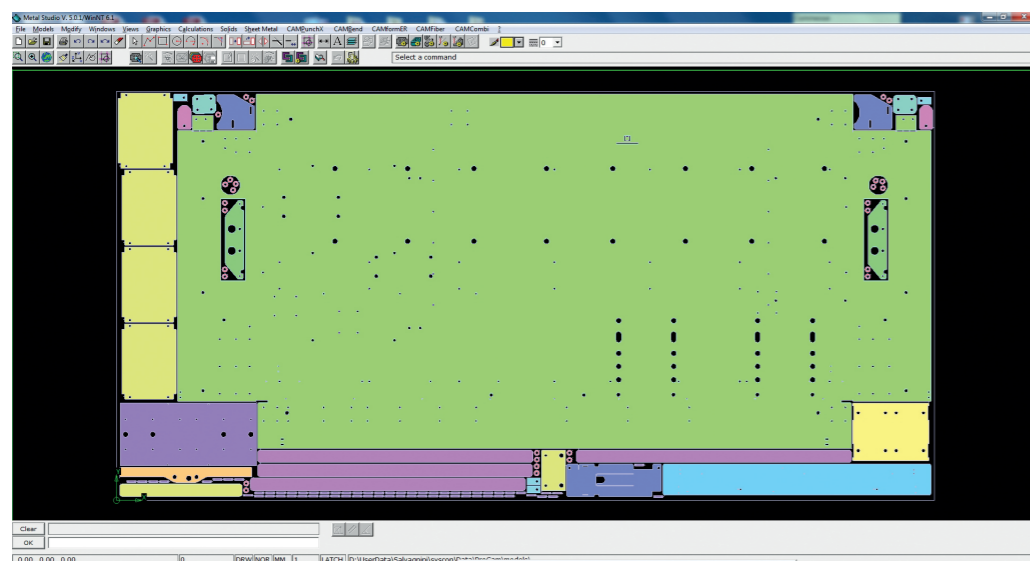
- Software for nesting programs for the Salvagnini laser cutting systems.

WHERE?

- On all the Salvagnini laser cutting system programming stations.

WHY?

- It allows nesting operations to be manually, semi-automatically and automatically managed.
- It guarantees the automatic and optimized composition of plates starting from a list of parts to be produced.
- It reduces scrap percentage by automatically using common cuts.



SIMFIBER

WHAT?

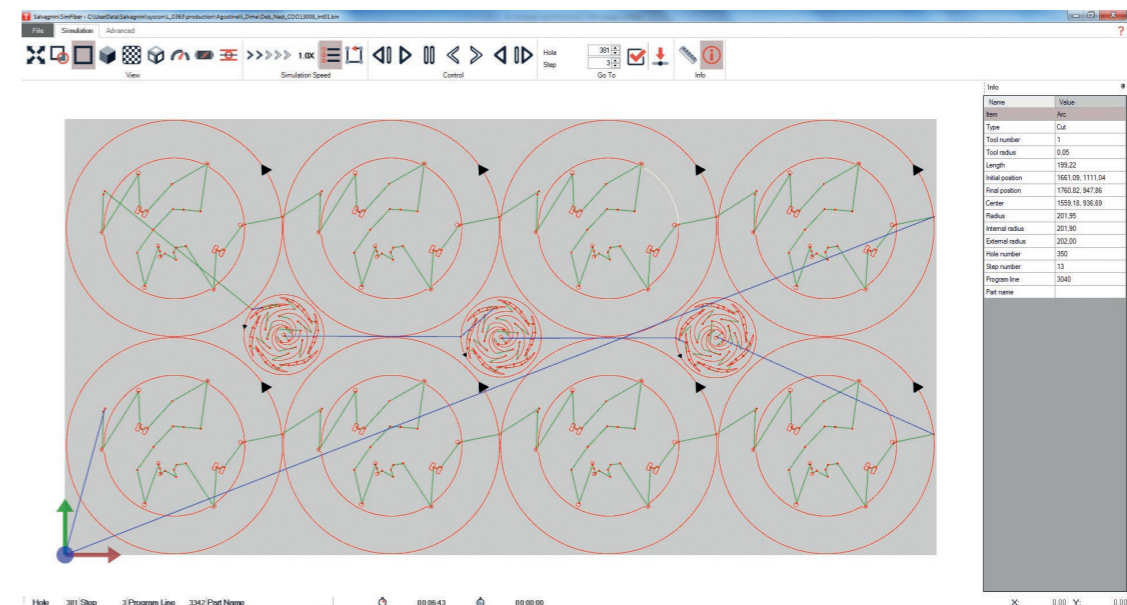
- Software for the preventive check of the machining sequences of programs for the Salvagnini laser cutting systems.

WHERE?

- On all the Salvagnini laser cutting system programming stations.

WHY?

- It allows the simulation of the real movements of the system and the insertion of micro-joints.
- It guarantees an accurate part check by means of dimensional and technological analyses.
- It reduces the possibility of production errors.





L3 L5

Laser cutting

S4Xe SL4

Punching

P1 P2lean P4Xe

Panel forming

B2 B3 E3 ROBO*form*ER

Bending

AJS[®] FMS S4 + P4 FlexCell

Systems

MTW MD MVL MBT MV

Logistics