

# Improve your business , Upgrade your software.

Discover the **Show Offer!**  
**EuroBLECH Hannover 2014**  
[www.salvagninigroup.com/promoeb14/](http://www.salvagninigroup.com/promoeb14/)



Salvagnini guarantees the perfect integration and continuity between machine and office proprietary software. The Salvagnini software packages and their upgrades always include the most recent releases and new functions for an easier and more efficient use of the systems and a faster return of investment.

## CAM.STUDIO

### WHAT?

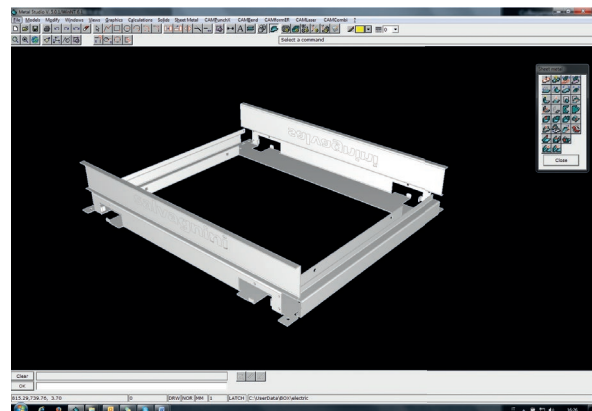
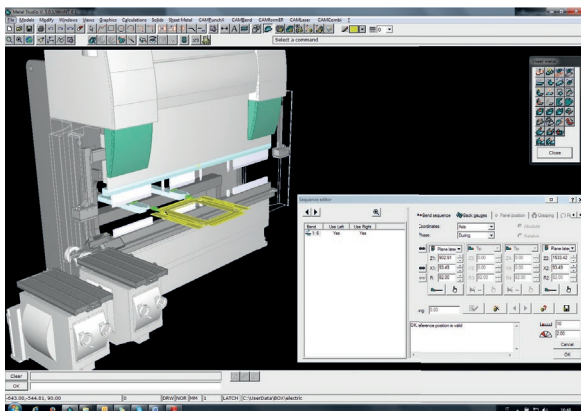
- Software for the automatic generation of programs for the Salvagnini press-brakes.

### WHERE?

- On all the Salvagnini press-brake programming stations.

### WHY?

- It allows 2D/3D drawings to be imported.
- It guarantees the correct bend sequence.
- It reduces collision errors.





**L3 L5**

Laser cutting

**S4Xe SL4**

Punching

**P1 P2lean P4Xe**

Panel forming

**B2 B3 E3 ROBO*form*ER**

Bending

**AJS® FMS S4 + P4 FlexCell**

Systems

**MTW MD MVL MBT MV**

Logistics